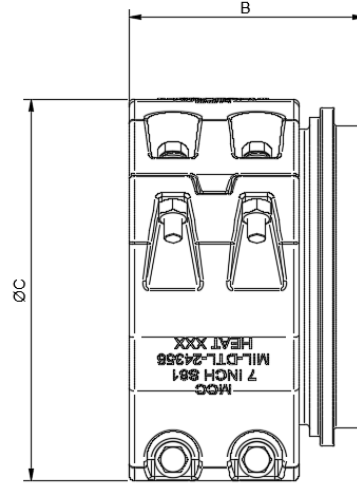




5 Myer Court | Beverley
 South Australia | 5009
 1300 853 250
www.mcc-ltd.com.au
info@mcc-ltd.com.au

MIL-DTL-24356 – Refuelling-at-sea Segmented Male Coupling – S81 Style.



SPECIFICATION

Couplings MCC Male S81 Style 2 ½-, 4-, 6-, and 7-Inch Segmented, reattachable, for Refuelling-at-Sea Hose in accordance with MIL-DTL-24356

MATERIAL

Name of part	Material	Specification
Male Hose Nipple	Cast or Wrought Aluminium Alloy	ASTM B26/B26M Alloy A356-T6 or ASTM B221, 6061-T6
Clamp Body	Wrought Aluminium Alloy	ASTM B221, 6061-T6 or ASTM B247, 6061-T6
Bolts	Corrosion-resistant steel	F593G B18.2.1
Nuts	Corrosion-resistant steel	F594G B18.2.2

DIMENSIONAL & SERVICE RATING

DN (in)	NSN	Part #	“B” (in/mm)	“C” (in/mm)	Min Burst Pressure (PSI/Mpa)	Weight (lbs/kg)
2 ½”	4730-01-154-6425	M24356-25MC-S81	-	-	-	-
4”	4730-00-007-2194	M24356-40MC-S81	4 7/8 (124)	6 21/32 (169)	600 (4.14)	5.51 (2.5)
6”	4730-00-793-9811	M24356-60MC-S81	-	-	-	-
7”	4730-00-793-9810	N24356-70MC-S81	5 5/8 (143)	9 39/64 (244)	600 (4.14)	10.14 (4.6)

SURFACE FINISH

Anodized MIL-PRF-8625F Type I or IC

INTERCHANGE

Hydrasearch – A-CPL/HOS

