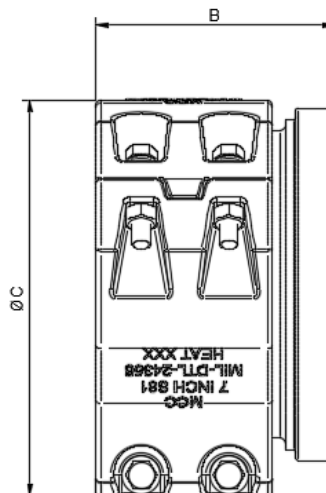




5 Myer Court | Beverley  
 South Australia | 5009  
 1300 853 250  
[www.mcc-ltd.com.au](http://www.mcc-ltd.com.au)  
[info@mcc-ltd.com.au](mailto:info@mcc-ltd.com.au)

## MIL-DTL-24356 – Refuelling-at-sea Segmented Female Coupling – S81 Style.



### SPECIFICATION

Couplings MCC Female S81 Style 2 ½-, 4-, 6-, and 7-Inch Segmented, reattachable, for Refuelling-at-Sea Hose in accordance with MIL-DTL-24356

### MATERIAL

Name of part	Material	Specification
Female Hose Nipple	Cast or Wrought Aluminium Alloy	ASTM B26/B26M Alloy A356-T6 or ASTM B221, 6061-T6
Clamp Body	Wrought Aluminium Alloy	ASTM B221, 6061-T6 or ASTM B247, 6061-T6
Bolts	Corrosion-resistant steel	F593G B18.2.1
Nuts	Corrosion-resistant steel	F594G B18.2.2

### DIMENSIONAL & SERVICE RATING

DN (in)	NSN	Part #	“B” (in/mm)	“C” (in/mm)	Min Burst Pressure (PSI/Mpa)	Weight (lbs/kg)
2 ½”	4730-01-154-6426	M24356-25FC-S81	-	-	-	-
4”	4730-00-007-2195	M24356-40FC-S81	4 <sup>27</sup> / <sub>32</sub> (123)	6 <sup>21</sup> / <sub>32</sub> (169)	600 (4.14)	5.51 (2.5)
6”	4730-00-793-9808	M24356-60FC-S81	-	-	-	-
7”	4730-00-793-9809	N24356-70FC-S81	5 <sup>33</sup> / <sub>64</sub> (140)	9 <sup>39</sup> / <sub>64</sub> (244)	600 (4.14)	9.92 (4.5)

### SURFACE FINISH

Anodized MIL-PRF-8625F Type I or IC

### INTERCHANGE

Hydrasearch – A-CPL/HOS

