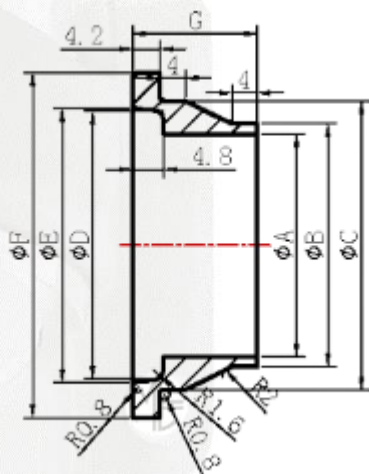




5 Myer Court | Beverley  
 South Australia | 5009  
 1300 853 250  
 www.mcc-ltd.com.au  
 info@mcc-ltd.com.au

## RJT (BSM) Welding Liner



### SPECIFICATION

RJT (BSM) Welding Liner  
 Working Temperature: 20°C - 150°C  
 Pressure Rating: 10 bar

### MATERIAL

AISI 316/316L Austenitic Stainless Steel

### DIMENSIONAL

NPS (DN)	Part #	A (mm)	B (mm)	C (mm)	D (mm)	E (mm)	F (mm)	G (mm)
25	1RJTWL	22.2	25.4	32.5	29.2	30.2	41.3	19.5
40	15RJTWL	34.9	38.1	45.2	41.9	42.9	54.0	19.5
50	2RJTWL	47.6	50.8	57.9	54.8	55.8	66.7	19.5
80	3RJTWL	73.0	76.2	83.3	80.0	81.0	92.1	19.5
100	4RJTWL	97.6	101.6	108.5	104.5	105.4	117.5	19.5

### SURFACE FINISH

Ra = 0.4-0.6 $\mu$ m

### MARKINGS

XRJTWL – X is variable dependant on the size of the liner, refer to “Dimensional” table to see example of part number  
 Heat Number

### MANUFACTURER’S CERTIFICATE

Certificate to BS EN 10204 2.1 available upon request at time of order.

